

# Computational epidemiology – Uri Obolski



**ד"ר אורי אובולסקי**

**[uriobolski@gmail.com](mailto:uriobolski@gmail.com)**

**בניין הקפסולה, חדר 202**

# Computational epidemiology – Uri Obolski

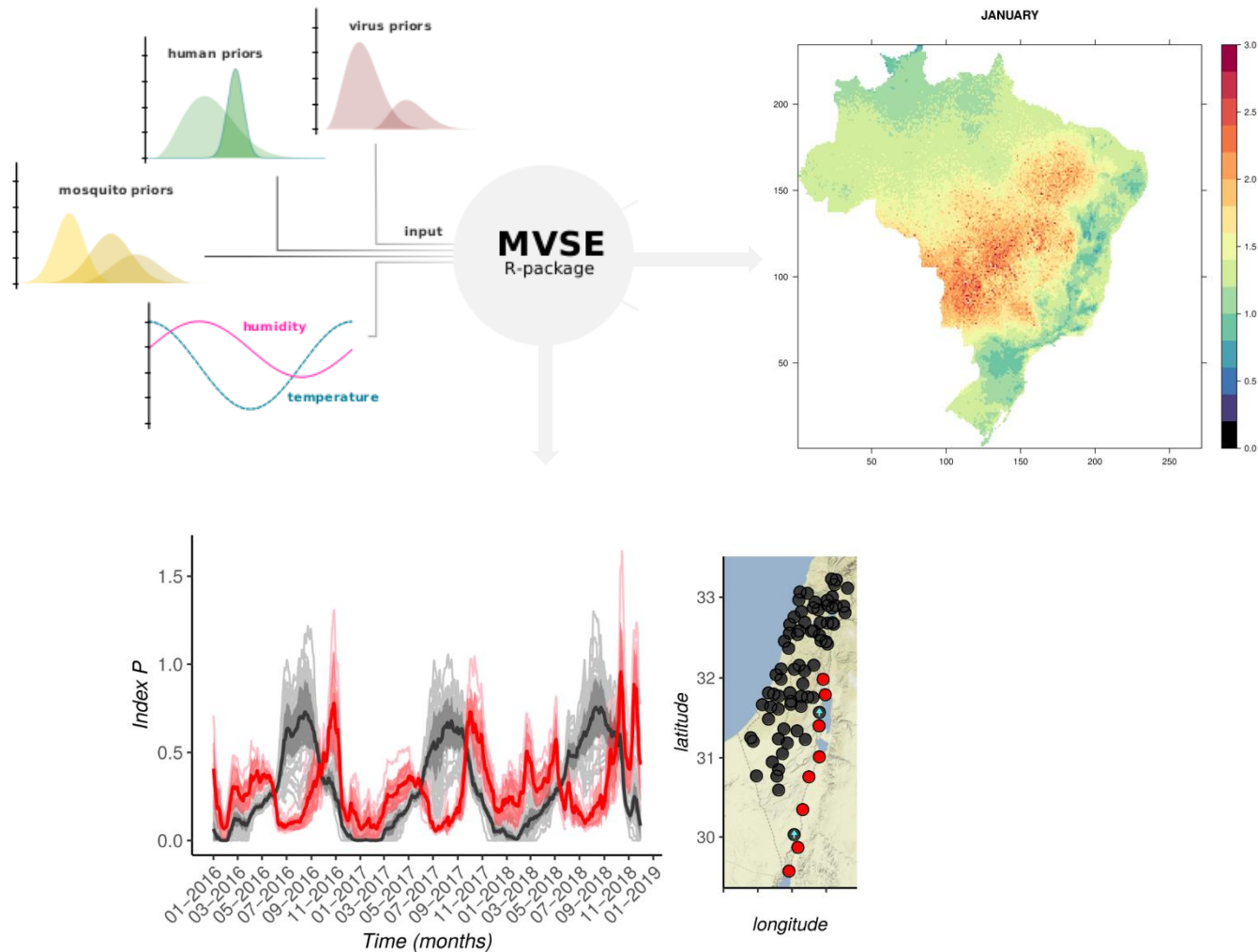
Our lab uses computational tools to predict and analyze environmentally related epidemiological issues, with an emphasis on infectious diseases.



# Computational epidemiology – Uri Obolski

We study how mosquito borne diseases are affected by climatic conditions:

- We develop methods to predict and analyze trends of mosquito borne disease.
- We apply our models to scenarios of climate change to produce forecasts.



# Computational epidemiology – Uri Obolski

We also try to reduce superfluous antibiotic:

- Continuous usage of antibiotics creates resistant bacteria.
- Infections are much harder to treat.
- Natural microbiota is destroyed, de-stabilising ecological systems.
- Can we use big data and machine learning to predict which interventions will reduce antibiotic resistance?

